

TRAVEL TO YOUR PRIVATE PARADISE

Langkawi Travel Bubble



ASIAN OVERLAND SERVICES TOURS & TRAVEL SDN. BHD. (30613-D)
No 39 & 40, Jalan Mamanda 9, 68000 Ampang, Kuala Lumpur, Malaysia
Tel: +60 3 42529100
www.asianoverland.com.my



MATTA Award – Best Inbound Tour Operator 2019
RAWR Award – Best DMS 2017
TTG AWARD – Best Travel Agency for
year 2008, 2009, 2010, 2013, & 2014

REOPENING OF THE INTERNATIONAL TOURISM SECTOR TRAVEL BUBBLE LANGKAWI ISLAND

LAST UPDATE: 2021-11-18

General conditions

- All entry into Langkawi Island is to be via air only.
- Minimum stay in Langkawi Island is 3 nights.
- Travellers are to be in Langkawi Island for a minimum of 7 nights if they wish to travel other parts of Malaysia after that.
- On the 8th day, travellers are allowed to travel domestically to the mainland via air or sea with the following conditions:
 - RT-PCR covid-19 test is negative on day 8 or 72 hours before leaving Langkawi Island.
 - Travel to areas declared under enhanced movement control order (MCO) is prohibited.
 - Travellers are to be fully vaccinated, minimum 14 days after the second vaccination dose or 28 days after one dose depending on the type of vaccine.
- Malaysian citizens are exempted from "Travel Insurance" and "Return Ticket".

Vaccines approved by the MOH

- Comirnaty (Pfizer-BioNTech)
- COVID-19AstraZeneca (Oxford-AstraZeneca)
- CoronaVac (Sinovac)
- Convidecia (CanSino)
- COVID-19Janssen (Johnson&Johnson)
- Covilo (Sinopham)
- Spikevax (Moderna)
- Sputnik

Remarks

- International Travellers must have a return ticket and travel insurance coverage of minimum USD 80,000 including coverage for Covid-19 for their full stay in Malaysia.
- Children below 18 are allowed to travel together with their parents/guardian, who are fully vaccinated.
- The following individuals are **NOT** allowed to participate in the International Tourism Bubble Langkawi:
 - Positive for Covid-19 infection
 - Close contact to positive cases
 - Individuals subject to a Home Surveillance Order (HSO)
 - Individuals who are subjected to mandatory quarantine
 - Individuals arriving from high-risk countries
 - Travellers who display Covid-19 symptoms
- Travellers in transit at KLIA-1 at Kuala Lumpur are required to go through various procedures including the downloading of the tracing app (MySejahtera).
- It is compulsory to book a travel package for a minimum of three to seven nights from a company registered and license under the Ministry of Tourism And Culture (MOTAC).



ASIAN OVERLAND SERVICES TOURS & TRAVEL SDN. BHD. (30613-D)

MATTA Award – Best Inbound Tour Operator 2019

RAWR Award – Best DMS 2017

TTG AWARD – Best Travel Agency for year 2008, 2009, 2010, 2013, & 2014

www.asianoverland.com.my



+60 16 661 9001

+60 16 2323 661

WhatsApp us if you
have any question

- At the time of this announcement, all Countries are eligible for this travel bubble arrangement except for the following countries:

EUROPE:

- Russian Federation
- Poland
- Ukraine
- Czechia
- Romania
- Georgia
- Belarus
- Slovakia
- Bosnia and Herzegovina
- Guernsey

AMERICA:

- Martinique
- Guyana
- Saint Kits and Nevis

AFRICA:

- Libya

Pre-departure to Malaysia

Compulsory to do a RT–PCR covid-19 test, 72 hours before departure to Langkawi.

The certificate is to be in printed or digital form and available to be viewed by relevant authorities upon request.

It is compulsory to buy a travel package from a tour operator registered and licensed with Ministry of Tourism and Culture (MOTAC) or through an overseas representative using the services of a registered and licensed Tour Operator (TO) with MOTAC.

Independent arrangements without using a registered licensed tour operator is **NOT** allowed.

The tourists' tour package should include the following details:

- Name of the tour operator including their license number.
- Return air ticket
- Accommodation
- Booking or the payment of the compulsory covid-19 test
- Tour Guide
- Itinerary arranged by the TO

International flight via Kuala Lumpur

Upon arrival to KLIA-1, tourists are required to go through certain procedures which include checking of required documents, downloading MySejahtera apps and they are to undergo a Covid-19 Rapid Molecular Test (RMT) in a private facility at KLIA-1. Booking and payment of this RMT test is to be included in the tour package offered by the TO.

After the test, tourists will be brought to a holding area to wait for the result. If the test result is positive or symptomatic, the private test facility will be responsible to arrange to send the tourists to an isolation or private quarantine facility (for category 1 & 2) or a private hospital (for category 3, 4, 5)



ASIAN OVERLAND SERVICES TOURS & TRAVEL SDN. BHD. (30613-D)

MATTA Award – Best Inbound Tour Operator 2019

RAWR Award – Best DMS 2017

TTG AWARD – Best Travel Agency for year 2008, 2009, 2010, 2013, & 2014

www.asianoverland.com.my



+60 16 661 9001

+60 16 2323 661

WhatsApp us if you have any question

Tourists tested negative and who have successfully gone through the filtering process can proceed to check in for their onward domestic to Langkawi. In the case the tourists are not able to fly to Langkawi on the same day, they can overnight in Hotel Sama Sama express or in a permitted area in KLIA-1.

The baggage for tourists transiting through KLIA-1 is to be checked in directly to Langkawi Island for airlines which have code share facility with Malaysia Airlines or has an interline arrangement.

For tourists with an air ticket which does not have code share facility with Malaysia Airlines or has interline arrangements, the appointed TO is to make arrangement for the baggage in KLIA-1.

After the above successful procedures, on arrival to Langkawi, tourists can start their holiday.

For tourists transiting through KLIA-1, and staying not more than 3 days, they are required to do a RT–PCR covid-19/Rapid Molecule test before leaving for their home country if the RMT test done in KLIA has exceeded 72 hours at the time of departure.

Tourists flying direct to Langkawi Island or has a technical stop in Penang Island

Upon arrival at Langkawi International Airport tourists need to go to the Ministry of Health (MOH) counter at Langkawi international airport (LIA) with the following documents:

- Vaccination certificate
- RT–PCR test results Covid-19 Rapid Molecular Test performed 72 hours before boarding a plane to Malaysia (printed or digital)
- Health Declaration Form from MOH that has been completed
- Proof of purchase of insurance minimum USD 80,000 (Covid-19 coverage)
- The MySejahtera application to been downloaded

Scan the QR code “Island International Tourism Bubble Traveller Langkawi”

Tourists who have passed necessary health check and screening can proceed to the JIM (Immigration Department) counter. At the immigration counter, tourists need to submit the following items:

- Passport
- Visa (if applicable)
- Ticket - Round Trip
- Tour Package (printed)

Tourists who have successfully passed the security checks and screening processes by JIM are allowed to leave LIA, meet with tour guide and proceed to the hotel.

RT–PCR covid-19 or Rapid Molecular Test is performed on the day of arrival or at the latest the second day at a private facility that has been booked by the operator tourism and managed by tour guide. Tourists are only allowed to continue their tourism activities after getting a negative test result and clearance from MOH.

If found to be symptomatic or tested positive, the TO is responsible need to report to the MOH or a private screening facility and will be responsible to arrange to send the tourists to an isolation or private quarantine facility (for category 1 & 2) or a private hospital (for category 3, 4, 5)

If test result is negative, tourists can proceed for their tourism activities.



ASIAN OVERLAND SERVICES TOURS & TRAVEL SDN. BHD. (30613-D)

MATTA Award – Best Inbound Tour Operator 2019

RAWR Award – Best DMS 2017

TTG AWARD – Best Travel Agency for year 2008, 2009, 2010, 2013, & 2014

www.asianoverland.com.my



+60 16 661 9001

+60 16 2323 661

WhatsApp us if you have any question

Stay in Langkawi Island Day 3 to Day 7

The movement of international tourists is limited to Langkawi Island only.

Tourists must undergo RT–PCR covid-19 Rapid Molecular Test Covid-19 within 72 hours before departure.

If found to be symptomatic or tested positive, the TO is responsible need to report to the MOH or a private screening facility and will be responsible to arrange to send the tourists to an isolation or private quarantine facility (for category 1 & 2) or a private hospital (for category 3, 4, 5).

Stay of more than 7 Days

If tourists wish to stay in Langkawi Island for more than 7 days or plan to go to the next destination either in or outside of Malaysia after the 7th day, tourists need to undergo a RT–PCR covid-19 Rapid Molecular Test on the 7th day if they are going to a destination in Malaysia or within 72 hours before departing Malaysia.

If tested negative, tourists can exit Langkawi Island via domestic exit (air or sea).

Documents will be reviewed to confirm that the tourists have stayed for a minimum of seven 7 days in Langkawi Island and the result of the RT–PCR covid-19 Rapid Molecular Test is negative by authorities at the departure gate.

If found to be symptomatic or positive, the responsible tour operator must report to the MOH a private screening facility that has been appointed to manage tourists to private quarantine isolation locations (for categories 1 & 2 or private hospitals (for categories 3 4 5 that have been identified).

Hereon, Tourists have a choice to use a TO or they can do their arrangements independently.

Tourists who have met the all-necessary conditions are allowed to travel to any destinations in Malaysia except for areas declared under the Tightened Movement Control Order.

Tourists must undergo a RT–PCR covid-19 Rapid Molecular Test within 72 hours before departure to their home country.

Departure from Malaysia

Tourists must undergo the RT–PCR covid-19 Rapid Molecular Test within 72 hours before leaving Malaysia.

If found to be symptomatic or positive, tourists will be sent to a private quarantine isolation location (for category 1 2 or a private hospital (for category 3 4 5 that has been identified).

If test results are negative, tourists are allowed to leave Malaysia.

Covid-19 Insurance Requirement

Each tourist must have a minimum insurance coverage of US\$80,000 (RM320,000). Items that should be covered under the insurance policy are below:

- Daily isolation facility expenses
- Emergency medical transportation by sea or by flight to the nearest private medical facility following a positive Covid-19 diagnosis (Categories 3 - 5)
- Emergency medical expenses to treat illness or injury
- Funeral and funeral management services
- Daily quarantine facility expenses



ASIAN OVERLAND SERVICES TOURS & TRAVEL SDN. BHD. (30613-D)

MATTA Award – Best Inbound Tour Operator 2019

RAWR Award – Best DMS 2017

TTG AWARD – Best Travel Agency for year 2008, 2009, 2010, 2013, & 2014

www.asianoverland.com.my



+60 16 661 9001

+60 16 2323 661

WhatsApp us if you have any question



BAYVIEW HOTEL LANGKAWI KUAH TOWN

DURATION	TWIN SHARING ROOM	TRIPLE SHARING ROOM
8 DAYS / 7 NIGHTS	RM 890	RM 870
4 DAYS / 3 NIGHTS	RM 670	RM 615
EXTRA NIGHT	RM 65	RM 75

PRICES ARE PER PERSON PER PACKAGE

Terms & Conditions:

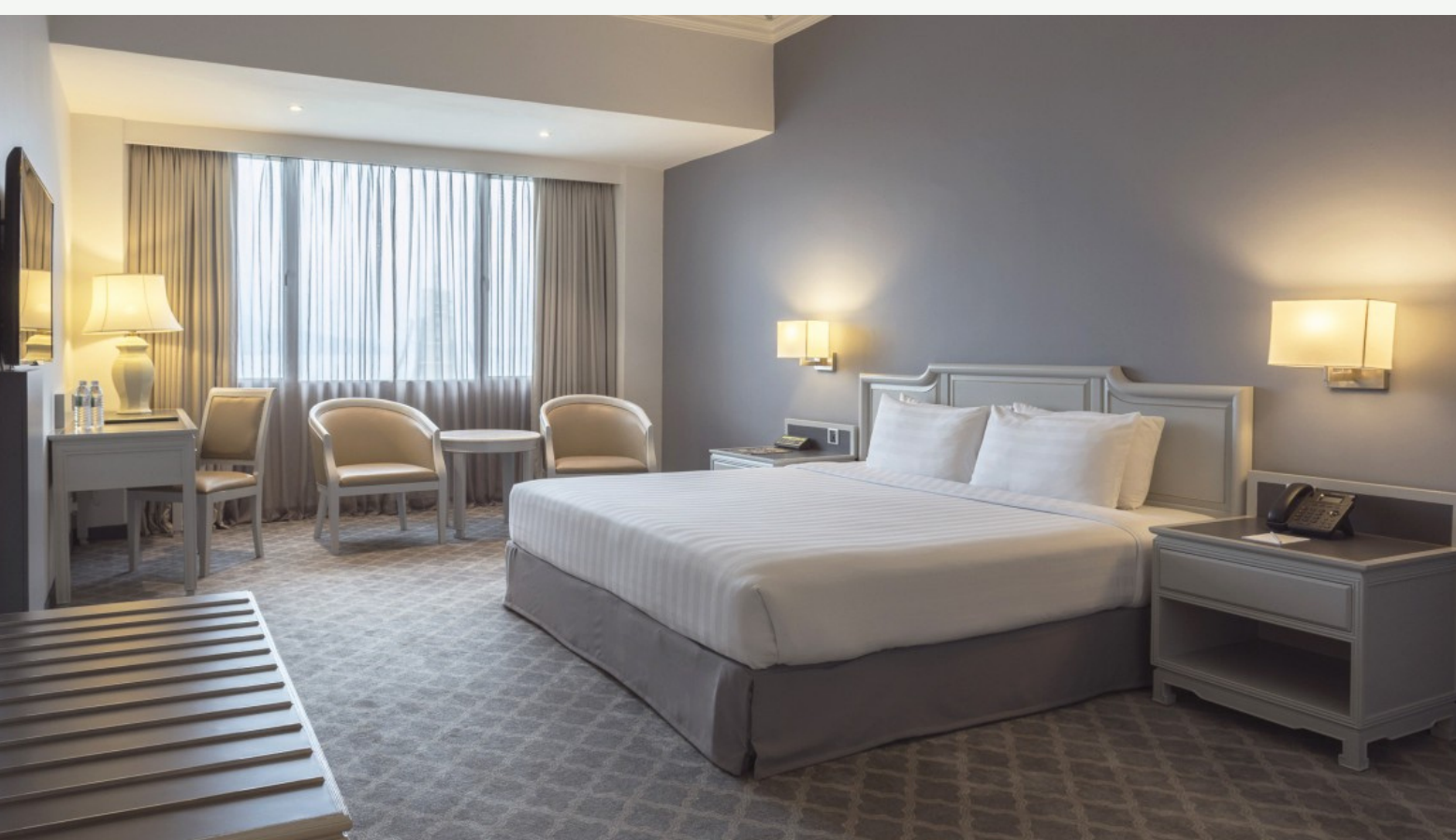
- Minimum is 2 Persons
- No Refund for early departure or incomplete stay
- Not refundable
- Validity: Immediate till 31st Dec 2021
- Peak Surcharge: RM 30 nett from 11th to 31st Dec 2021
- Child With bed 95% of the adult (triple rate) Incl. Breakfast
- Child without bed: 70% of the adult rate
- Single Supplement: RM 775 per person per package for 8D/7N and RM 470 per person per package for 4D/3N

Package Includes:

- Accommodation in a Superior room
- Daily Breakfast
- Airport Return Transfer
- Langkawi Half-Day Mangrove tour Incl. lunch
- Tour guide call center service for duration of stay
- Tour guide for tour & airport transfers

Package Excludes:

- Anything not mentioned under Includes
- Travel Insurance & PCR tests
- RM10.00 per room per night Tourism Tax & RM3.00 per room per night Local Government Fee



ASIAN OVERLAND SERVICES TOURS & TRAVEL SDN. BHD. (30613-D)

MATTA Award – Best Inbound Tour Operator 2019

RAWR Award – Best DMS 2017

TTG AWARD – Best Travel Agency for year 2008, 2009, 2010, 2013, & 2014

www.asianoverland.com.my



+60 16 661 9001

+60 16 2323 661

WhatsApp us if you have any question



BELLA VISTA WATERFRONT LANGKAWI KUAH TOWN

DURATION	TWIN SHARING ROOM	TRIPLE SHARING ROOM
8 DAYS / 7 NIGHTS	RM 900	RM 995
4 DAYS / 3 NIGHTS	RM 650	RM 715
EXTRA NIGHT	RM 68	RM 90

PRICES ARE PER PERSON PER PACKAGE

Terms & Conditions:

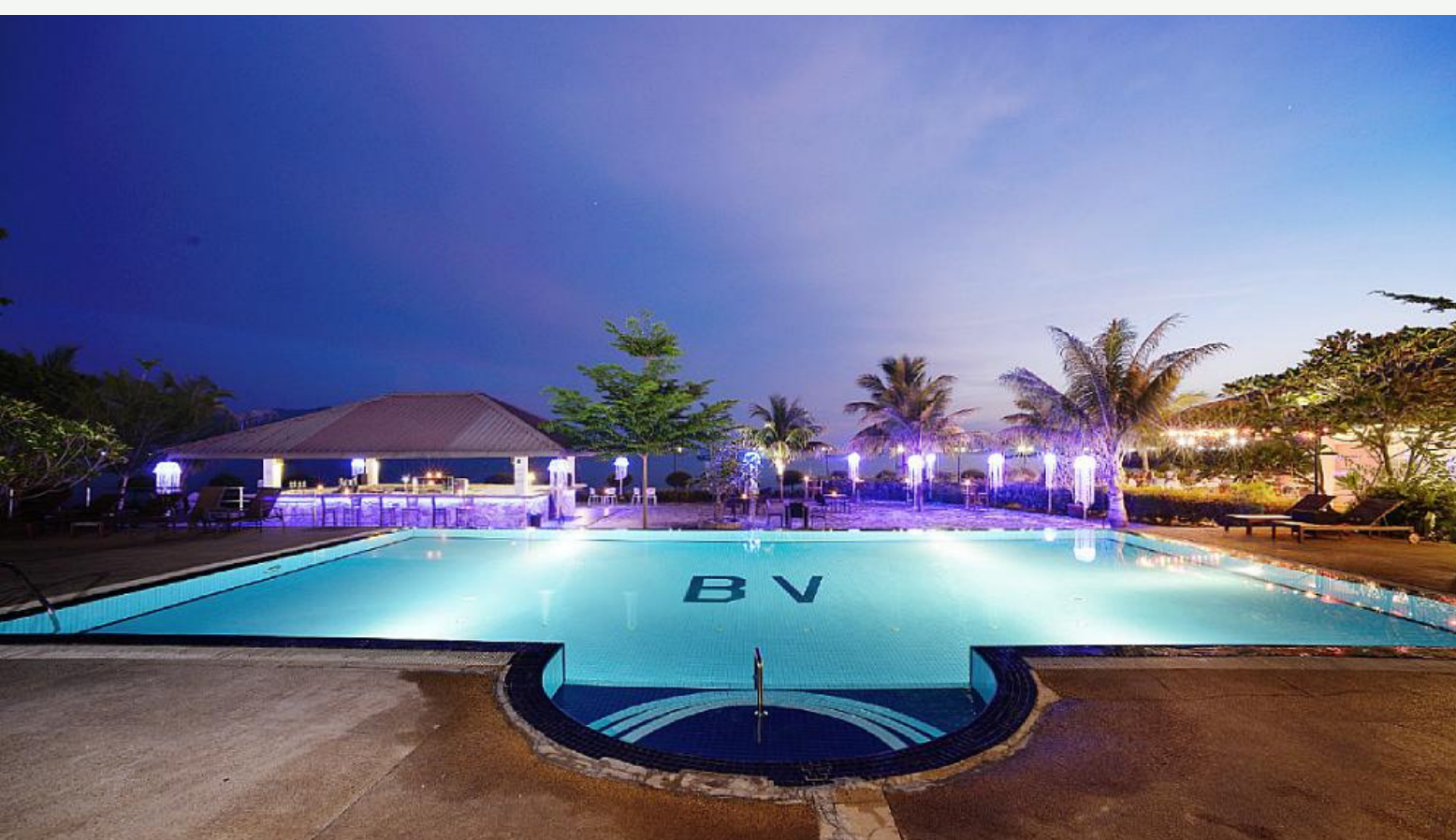
- Minimum is 2 Persons
- No Refund for early departure or incomplete stay
- Validity: Immediate till 31st Dec 2021
- Peak Surcharge: RM 30 nett for 25th, 26th, and 31st Dec 2021
- Compulsory Christmas Dinner New year Eve Dinner Surcharge: RM 88 per adult & RM 44 per child
- Compulsory Surcharge: RM 88 per adult & RM 44 per child
- Child With bed: 95% of the adult Rate (triple rate) Incl. Breakfast
- Child Rate on Sharing basis (No bed): 70% of the adult Rate Incl. Breakfast
- Single Supplement: RM 760 per person per package for 8D/7N and RM 505 per person per package for 4D/3N

Package Includes:

- Accommodation in a Deluxe room (Twin Sharing Room)
- Accommodation in a Studio Deluxe room (Triple Sharing Room)
- Daily Breakfast
- Airport Return Transfer
- Langkawi Half-Day Mangrove tour Incl. lunch
- Tour guide call center service for duration of stay
- Tour guide for tour & airport transfers

Package Excludes:

- Travel Insurance & PCR tests
- RM10.00 per room per night Tourism Tax & RM3.00 per room per night Local Government Fee



ASIAN OVERLAND SERVICES TOURS & TRAVEL SDN. BHD. (30613-D)

MATTA Award – Best Inbound Tour Operator 2019

RAWR Award – Best DMS 2017

TTG AWARD – Best Travel Agency for year 2008, 2009, 2010, 2013, & 2014

www.asianoverland.com.my



+60 16 661 9001

+60 16 2323 661

WhatsApp us if you have any question



ADYA HOTEL LANGKAWI KUAH TOWN

DURATION	TWIN SHARING ROOM	TRIPLE SHARING ROOM
8 DAYS / 7 NIGHTS	RM 1120	RM 1000
4 DAYS / 3 NIGHTS	RM 730	RM 625
EXTRA NIGHT	RM 105	RM 100

PRICES ARE PER PERSON PER PACKAGE

Terms & Conditions:

- Minimum is 2 Persons
- No Refund for early departure or incomplete stay
- Not refundable
- Validity: Immediate till 31st Dec 2021
- Single Supplement: RM 705 per person per package for 8D/7N and RM 300 per person per package for 4D/3N

Package Includes:

- Accommodation in a Deluxe Seaview room
- Daily Breakfast
- Airport Return Transfer
- Langkawi Half-Day Mangrove tour Incl. lunch
- Tour guide call center service for duration of stay
- Tour guide for tour & airport transfers

Package Excludes:

- Travel Insurance & PCR tests
- RM10.00 per room per night Tourism Tax & RM3.00 per room per night Local Government Fee



ASIAN OVERLAND SERVICES TOURS & TRAVEL SDN. BHD. (30613-D)

MATTA Award – Best Inbound Tour Operator 2019

RAWR Award – Best DMS 2017

TTG AWARD – Best Travel Agency for year 2008, 2009, 2010, 2013, & 2014

www.asianoverland.com.my



+60 16 661 9001

+60 16 2323 661

WhatsApp us if you have any question



COTTAGE BY THE SEA BY FRANGIPANI LANGKAWI

DURATION	TWIN SHARING ROOM	TRIPLE SHARING ROOM
8 DAYS / 7 NIGHTS	RM 1675	RM 1510
4 DAYS / 3 NIGHTS	RM 1010	RM 955
EXTRA NIGHT	RM 145	RM 140

PRICES ARE PER PERSON PER PACKAGE

Terms & Conditions:

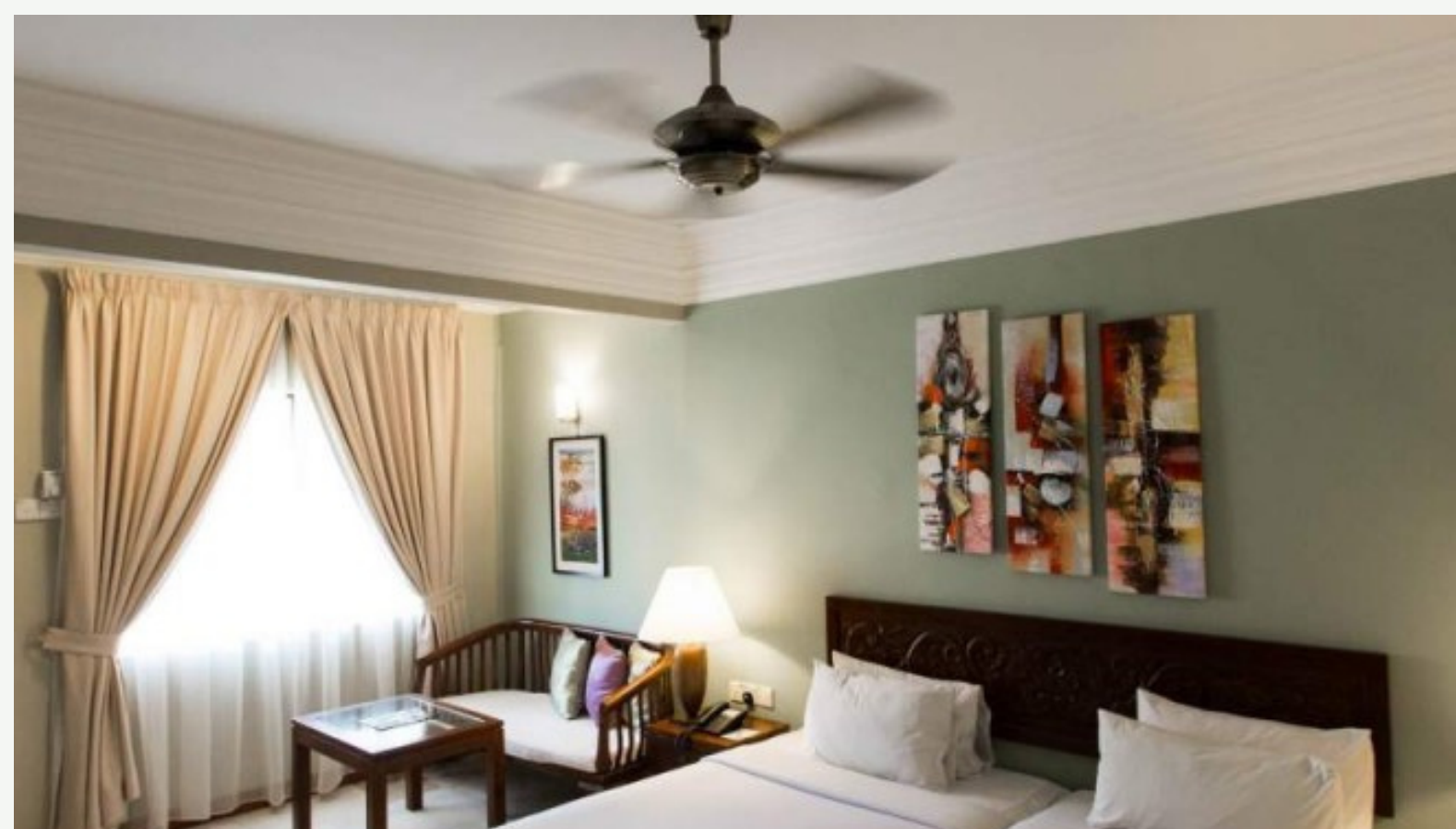
- Minimum is 2 Persons
- No Refund for early departure or incomplete stay
- Not refundable
- Validity: Immediate till 31st Dec 2021
- Peak Surcharge: RM 115 nett per room / night from 15th to 31st Dec 2021
- Single Supplement: RM 1425 per person per package for 8D/7N and RM 900 per person per package for 4D/3N

Package Includes:

- Accommodation in Deluxe Room
- Room Only
- Airport Return Transfer
- Langkawi Half-Day Mangrove tour Incl. lunch
- Tour guide call center service for duration of stay
- Tour guide for tour & airport transfers

Package Excludes:

- Travel Insurance & PCR tests
- RM10.00 per room per night Tourism Tax & RM3.00 per room per night Local Government Fee



ASIAN OVERLAND SERVICES TOURS & TRAVEL SDN. BHD. (30613-D)

MATTA Award – Best Inbound Tour Operator 2019

RAWR Award – Best DMS 2017

TTG AWARD – Best Travel Agency for year 2008, 2009, 2010, 2013, & 2014

www.asianoverland.com.my



+60 16 661 9001

+60 16 2323 661

WhatsApp us if you have any question



HOLIDAY VILLA BEACH RESORT & SPA LANGKAWI

DURATION	TWIN SHARING ROOM	TRIPLE SHARING ROOM
8 DAYS / 7 NIGHTS	RM 1810	RM 1405
4 DAYS / 3 NIGHTS	RM 950	RM 740
EXTRA NIGHT	RM 180	RM 140

PRICES ARE PER PERSON PER PACKAGE

Terms & Conditions:

- Minimum is 2 Persons
- No Refund for early departure or incomplete stay
- Not refundable
- Validity: Immediate till 31st Dec 2021
- Peak Surcharge: RM 105 nett per room / night from 15th to 31st Dec 2021
- Maximum 02 children below 12 years stay free in parent's rooms using existing bedding (Breakfast is chargeable)
- Child Breakfast Cost: RM 27 nett per night
- Single Supplement: RM 1120 per person per package for 8D/7N and RM 480 per person per package for 4D/3N

Package Includes:

- Accommodation in Superior Room
- Room Only
- Airport Return Transfer
- Langkawi Half-Day Mangrove tour Incl. lunch
- Tour guide call center service for duration of stay
- Tour guide for tour & airport transfers

Package Excludes:

- Breakfast, Lunch & Dinner
- Travel Insurance & PCR tests
- RM10.00 per room per night Tourism Tax & RM3.00 per room per night Local Government Fee



ASIAN OVERLAND SERVICES TOURS & TRAVEL SDN. BHD. (30613-D)

MATTA Award – Best Inbound Tour Operator 2019

RAWR Award – Best DMS 2017

TTG AWARD – Best Travel Agency for year 2008, 2009, 2010, 2013, & 2014

www.asianoverland.com.my



+60 16 661 9001

+60 16 2323 661

WhatsApp us if you have any question



BERJAYA HOTEL LANGKAWI

DURATION	TWIN SHARING ROOM	TRIPLE SHARING ROOM
8 DAYS / 7 NIGHTS	RM 1500	RM 1950
4 DAYS / 3 NIGHTS	RM 950	RM 1185
EXTRA NIGHT	RM 140	RM 215

PRICES ARE PER PERSON PER PACKAGE

Terms & Conditions:

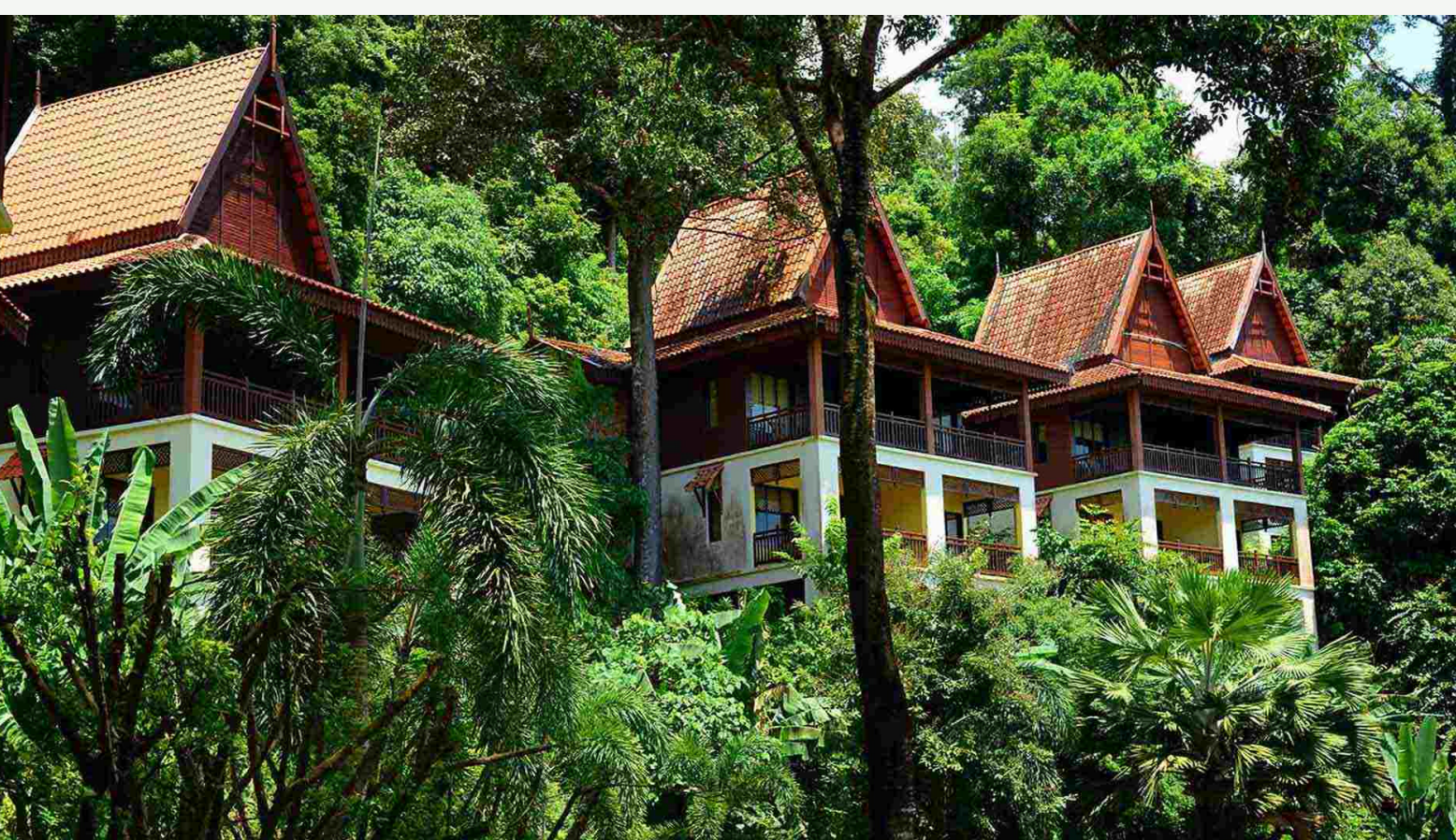
- Minimum is 2 Persons
- No Refund for early departure or incomplete stay
- Not refundable
- Validity: Immediate till 31st Dec 2021
- Peak Surcharge: RM 100 nett from 23th to 31st Dec 2021
- Above Rates are not applicable for citizens from Netherlands and Germany
- Single Supplement: RM 1300 per person per package for 8D/7N and RM 750 per person per package for 4D/3N

Package Includes:

- Accommodation in Rainforest Chalet for Twin Room and Premier Seaview chalet for Triple Room
- Daily Breakfast
- Airport Return Transfer
- Langkawi Half-Day Mangrove tour Incl. lunch
- Tour guide call center service for duration of stay
- Tour guide for tour & airport transfers

Package Excludes:

- Travel Insurance & PCR tests
- RM10.00 per room per night Tourism Tax & RM3.00 per room per night Local Government Fee



ASIAN OVERLAND SERVICES TOURS & TRAVEL SDN. BHD. (30613-D)

MATTA Award – Best Inbound Tour Operator 2019

RAWR Award – Best DMS 2017

TTG AWARD – Best Travel Agency for year 2008, 2009, 2010, 2013, & 2014

www.asianoverland.com.my



+60 16 661 9001

+60 16 2323 661

WhatsApp us if you have any question



PELANGI BEACH RESORT & SPA, LANGKAWI

DURATION	TWIN SHARING ROOM	TRIPLE SHARING ROOM
8 DAYS / 7 NIGHTS	RM 2350	RM 1920
4 DAYS / 3 NIGHTS	RM 1370	RM 1240
EXTRA NIGHT	RM 245	RM 200

PRICES ARE PER PERSON PER PACKAGE

Terms & Conditions:

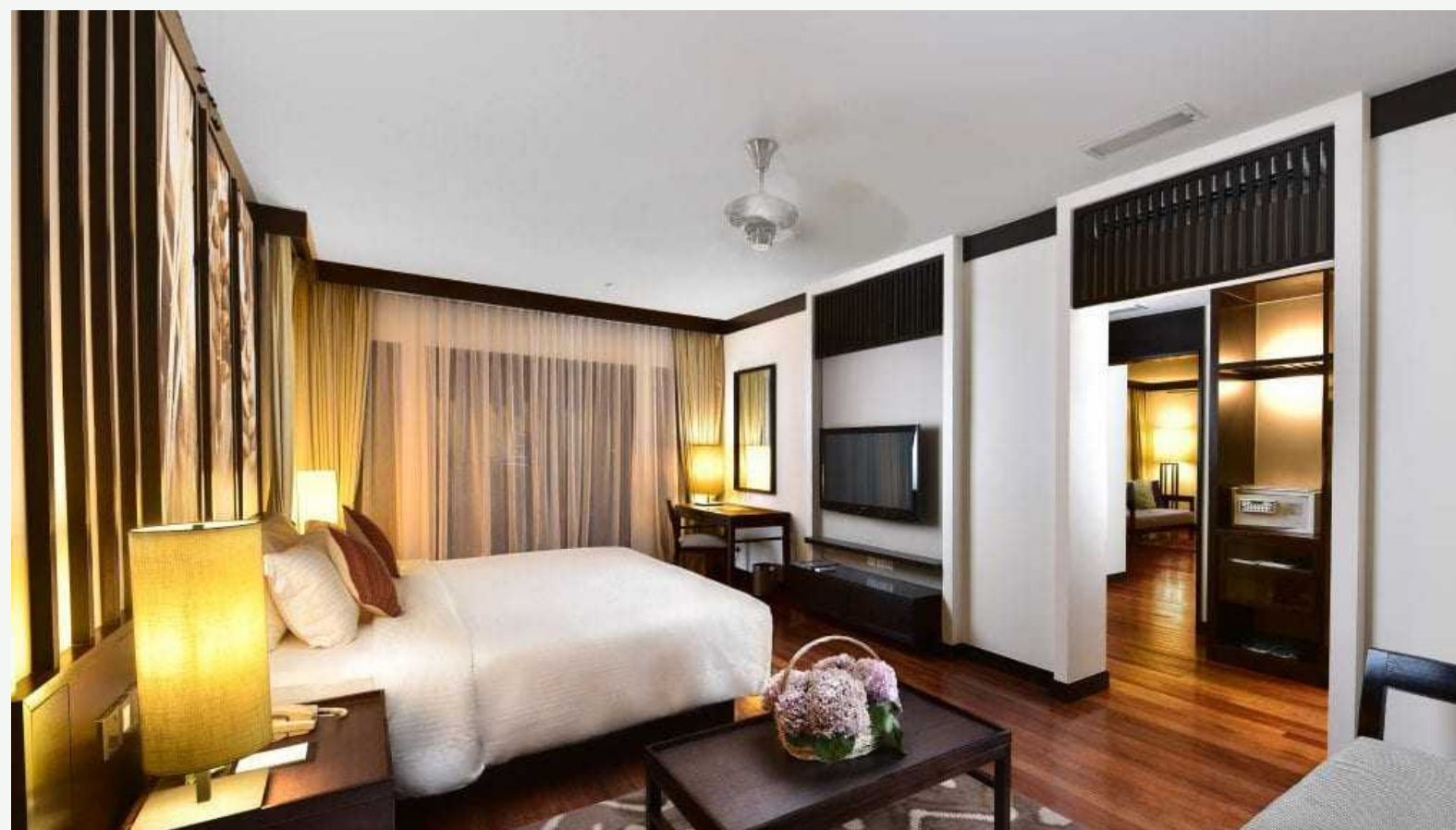
- Minimum is 2 Persons
- No Refund for early departure or incomplete stay
- Not refundable
- Validity: Immediate till 31st Dec 2021
- Peak Surcharge: RM 120 nett per room/night of the price from 20th to 31st Dec 2021
- Weekend surcharge : Thursday, Friday, Saturday: RM 50 nett per room/night
- No Christmas and New year eve dinners
- Child Rate on Sharing basis (No bed): 30% of the adult rate
- Single Supplement: RM 2150 per person per package for 8D/7N and RM 1200 per person per package for 4D/3N

Package Includes:

- Accommodation in a Garden Terrace room Category
- Daily Breakfast
- Airport Return Transfer
- Langkawi Half-Day Mangrove tour Incl. lunch
- Tour guide call center service for duration of stay
- Tour guide for tour & airport transfers

Package Excludes:

- Travel Insurance & PCR tests
- RM10.00 per room per night Tourism Tax & RM3.00 per room per night Local Government Fee



ASIAN OVERLAND SERVICES TOURS & TRAVEL SDN. BHD. (30613-D)

MATTA Award – Best Inbound Tour Operator 2019

RAWR Award – Best DMS 2017

TTG AWARD – Best Travel Agency for year 2008, 2009, 2010, 2013, & 2014

www.asianoverland.com.my



+60 16 661 9001

+60 16 2323 661

WhatsApp us if you have any question



THE DATAI LANGKAWI

DURATION	TWIN SHARING ROOM	TRIPLE SHARING ROOM
8 DAYS / 7 NIGHTS	RM 8800	RM 7000
4 DAYS / 3 NIGHTS	RM 4050	RM 3220
EXTRA NIGHT	RM 1180	RM 940

PRICES ARE PER PERSON PER PACKAGE

Terms & Conditions:

- Minimum is 2 Persons
- No Refund for early departure or incomplete stay
- Not refundable
- Validity: Immediate till 31st Dec 2021
- Peak Surcharge: RM 2650 per room/night from 21st to 31st Dec 2021

Package Includes:

- Accommodation in Canopy Deluxe room Category
- Daily Breakfast
- Airport Return Transfer
- Langkawi Half-Day Mangrove tour Incl. lunch
- Tour guide call center service for duration of stay
- Tour guide for tour & airport transfers

Package Excludes:

- Travel Insurance & PCR tests
- RM10.00 per room per night Tourism Tax & RM3.00 per room per night Local Government Fee



ASIAN OVERLAND SERVICES TOURS & TRAVEL SDN. BHD. (30613-D)

MATTA Award – Best Inbound Tour Operator 2019

RAWR Award – Best DMS 2017

TTG AWARD – Best Travel Agency for year 2008, 2009, 2010, 2013, & 2014

www.asianoverland.com.my



+60 16 661 9001

+60 16 2323 661

WhatsApp us if you have any question

SPECIAL PROMO



THE RITZ-CARLTON, LANGKAWI

DURATION	TWIN SHARING ROOM	TRIPLE SHARING ROOM
8 DAYS / 7 NIGHTS	RM 4500	RM 3850
4 DAYS / 3 NIGHTS	RM 3000	RM 2550
EXTRA NIGHT	RM 750	RM 650

PRICES ARE PER PERSON PER PACKAGE
APPLICABLE ONLY IF THE WHOLE PERIOD OF STAY IS OUT OF
THE PEAK PERIOD (23RD DEC TO 7TH JAN)

Terms & Conditions:

- Minimum is 2 Persons
- No Refund for early departure or incomplete stay
- Not refundable
- Validity: Immediate till 29th Jan 2022
- The above 8D/7N Rate is applicable ONLY if the whole period of stay is out of the peak period (23rd Dec to 7th Jan)
- Peak Surcharge: RM 1950 nett per room/night from 23th to 7th Jan 2022
- Single Supplement: RM 4100 per person per package for 8D/7N and RM 2450 per person per package for 4D/3N
- No departure allowed 31st Dec & 1st Jan

Package Includes:

- Accommodation in Rainforest Deluxe
- Daily Breakfast
- Airport Return Transfer
- Langkawi Half-Day Mangrove tour Incl. lunch
- Tour guide call center service for duration of stay
- Tour guide for tour & airport transfers

Package Excludes:

- Travel Insurance & PCR tests
- RM10.00 per room per night Tourism Tax & RM3.00 per room per night Local Government Fee



ASIAN OVERLAND SERVICES TOURS & TRAVEL SDN. BHD. (30613-D)
MATTA Award – Best Inbound Tour Operator 2019
RAWR Award – Best DMS 2017
TTG AWARD – Best Travel Agency for year 2008, 2009, 2010, 2013, & 2014

www.asianoverland.com.my


+60 16 661 9001
+60 16 2323 661
WhatsApp us if you have any question



THE RITZ-CARLTON, LANGKAWI

DURATION	TWIN SHARING ROOM	TRIPLE SHARING ROOM
8 DAYS / 7 NIGHTS	RM 5990	RM 5200
4 DAYS / 3 NIGHTS	RM 3000	RM 2550
EXTRA NIGHT	RM 750	RM 650

PRICES ARE PER PERSON PER PACKAGE

Terms & Conditions:

- Minimum is 2 Persons
- No Refund for early departure or incomplete stay
- Not refundable
- Validity: Immediate till 29th Jan 2022
- Peak Surcharge: RM 1920 nett per room/night from 23th to 7th Jan 2022
- Single Supplement: RM 5690 per person per package for 8D/7N and RM 2450 per person per package for 4D/3N
- No departure allowed 31st Dec & 1st Jan

Package Includes:

- Accommodation in Rainforest Deluxe
- Daily Breakfast
- Airport Return Transfer
- Langkawi Half-Day Mangrove tour Incl. lunch
- Tour guide call center service for duration of stay
- Tour guide for tour & airport transfers

Package Excludes:

- Travel Insurance & PCR tests
- RM10.00 per room per night Tourism Tax & RM3.00 per room per night Local Government Fee



ASIAN OVERLAND SERVICES TOURS & TRAVEL SDN. BHD. (30613-D)

MATTA Award – Best Inbound Tour Operator 2019

RAWR Award – Best DMS 2017

TTG AWARD – Best Travel Agency for year 2008, 2009, 2010, 2013, & 2014

www.asianoverland.com.my



+60 16 661 9001

+60 16 2323 661

WhatsApp us if you have any question

SPECIAL PROMO



THE ST. REGIS LANGKAWI

DURATION	TWIN SHARING ROOM	TRIPLE SHARING ROOM
8 DAYS / 7 NIGHTS	RM 4500	N/A
4 DAYS / 3 NIGHTS	RM 3000	N/A
EXTRA NIGHT	RM 760	N/A

PRICES ARE PER PERSON PER PACKAGE
APPLICABLE ONLY IF THE WHOLE PERIOD OF STAY IS OUT OF
THE PEAK PERIOD (23RD DEC TO 7TH JAN)

Terms & Conditions:

- Minimum is 2 Persons
- No Refund for early departure or incomplete stay
- Not refundable
- Validity: Immediate till 28th Jan 2022
- The above 8D/7N Rate is applicable ONLY if the whole period of stay is out of the peak period (23rd Dec to 7th Jan)
- Peak Surcharge: RM 1950 nett per room/night from 23th to 7th Jan 2022
- Single Supplement: RM 4060 per person per package for 8D/7N and RM 2500 per person per package for 4D/3N

Package Includes:

- Accommodation in Premier Rainforest
- Daily Breakfast
- Airport Return Transfer
- Langkawi Half-Day Mangrove tour Incl. lunch
- Tour guide call center service for duration of stay
- Tour guide for tour & airport transfers

Package Excludes:

- Travel Insurance & PCR tests
- RM10.00 per room per night Tourism Tax & RM3.00 per room per night Local Government Fee



ASIAN OVERLAND SERVICES TOURS & TRAVEL SDN. BHD. (30613-D)
MATTA Award – Best Inbound Tour Operator 2019
RAWR Award – Best DMS 2017
TTG AWARD – Best Travel Agency for year 2008, 2009, 2010, 2013, & 2014

www.asianoverland.com.my


+60 16 661 9001
+60 16 2323 661
WhatsApp us if you have any question



THE ST. REGIS LANGKAWI

DURATION	TWIN SHARING ROOM	TRIPLE SHARING ROOM
8 DAYS / 7 NIGHTS	RM 5990	N/A
4 DAYS / 3 NIGHTS	RM 3000	N/A
EXTRA NIGHT	RM 760	N/A

PRICES ARE PER PERSON PER PACKAGE

Terms & Conditions:

- Minimum is 2 Persons
- No Refund for early departure or incomplete stay
- Not refundable
- Validity: Immediate till 28th Jan 2022
- Peak Surcharge: RM 1550 nett per room/night from 23th to 7th Jan 2022
- Single Supplement: RM 5690 per person per package for 8D/7N and RM 2500 per person per package for 4D/3N

Package Includes:

- Accommodation in Premier Rainforest
- Daily Breakfast
- Airport Return Transfer
- Langkawi Half-Day Mangrove tour Incl. lunch
- Tour guide call center service for duration of stay
- Tour guide for tour & airport transfers

Package Excludes:

- Travel Insurance & PCR tests
- RM10.00 per room per night Tourism Tax & RM3.00 per room per night Local Government Fee



ASIAN OVERLAND SERVICES TOURS & TRAVEL SDN. BHD. (30613-D)

MATTA Award – Best Inbound Tour Operator 2019

RAWR Award – Best DMS 2017

TTG AWARD – Best Travel Agency for year 2008, 2009, 2010, 2013, & 2014

www.asianoverland.com.my



+60 16 661 9001

+60 16 2323 661

WhatsApp us if you have any question

Langkawi Northern Mangrove Tour



Tour Highlights:

- Kilim Karst Geoforest
- Fish Feeding at the Floating Fish Farm
- Eagles Feeding at the Mangrove River
- Bat Caves

Tour Description:

Take a trip to Langkawi's secret forest; the fascinating mangroves of Langkawi which are uniquely connected to awesome limestone rock formations and sheer rock outcroppings.

Recognized as a UNESCO — Geopark, its unique geology, flora and fauna are now accessible to tourists. These mangrove forests play an integral role in protecting the coastline.

You may encounter intriguing organisms such as mudskippers, crabs, dragonflies and monitor lizards and amongst the trees are the monkeys, birds like the rare Brown Winged Stork-bill Kingfisher and the amazing birds of prey. If you are lucky, as the boat travels along the river you will see various types of mangrove animals like otters and Long-tailed Macaques.

Visit the bat cave and then explore the enchanting crocodile cave by boat. Visit a fish farm where its aquaculture activities are an important industry on the island. Tame fish will tickle your fingertips as you feed them! Watch birds of prey such as Brahminy Kites swoo down from the sky to feed.

Remarks

- The tincludes lunch at a local restaurant.
- The tour is arranged on SIC basis with licensed local tour guide.
- AOS has right to reschedule the tour as it is subject to the weather condition.

Important Terms and Conditions:

- Before traveling, travellers are required to check with the airline on the latest SOP as the Terms and Conditions of this program are subject to change by the relevant authorities.
- All bookings are subject to the room availability upon confirmation.
- Asian Overland Services reserves the right to amend or modify the program if required.
- The rates are subject to change during peak season as stated in the terms and conditions.
- Asian Overland Services has right to reschedule the tour as it is subject to the weather condition.
- The Package rate excludes the RT-PCR test fee. The travellers may register the test or pre-purchase the test at <https://airport.doctor2u.my>. If Asian Overland Services is required to purchase the test on behalf of clients, the supplement handling fee is MYR 70.00 per person (additional to the test fee mentioned in the website).
- Travellers are required to download and fill up the Health Declaration form from the below link for inspection upon arrival:
https://covid-19.moh.gov.my/garis-panduan/garis-panduan-kkm/ANNEX_9_Appendix_1-Health_Declaration_Form_COVID-19_12112021.pdf
- Our package price includes the contact of our tour guide as required by the Ministry of Tourism, Arts, & Culture.
- To make a reservation, please send your inquiries to salman.faris@asianoverland.com.my

Who we are:

Asian Overland Services Tours & Travel Sdn Bhd, better known as AOS, is a Malaysian company with more than 45 years experience in the leisure and incentive sectors of tourism. Started in 1976 and today is a leading and reputable company with its own B2B booking engine and B2C platform and fleet of vehicles.

Being in the business for such a long time gives us the advantage to pool our experience and expertise to be a specialist in providing high quality tour services, interesting and fun programmes with our eco and nature tours from leisure to adventurous levels, along with tailor-made and incentive programmes to suit the different requirements of our clients.

We are extremely honoured and humbled by the many awards received over the years. Each award deserves the same level of appreciation as each one endorses our commitment to innovation, best practice in achieving quality tour products & services and demonstrates that a company with vision and team spirit can succeed in today's competitive market.

To get more information about us, you may visit our website at www.asianoverland.com.my



ASIAN OVERLAND SERVICES TOURS & TRAVEL SDN. BHD. (30613-D)

MATTA Award – Best Inbound Tour Operator 2019

RAWR Award – Best DMS 2017

TTG AWARD – Best Travel Agency for year 2008, 2009, 2010, 2013, & 2014

www.asianoverland.com.my



+60 16 661 9001

+60 16 2323 661

WhatsApp us if you have any question

We Make The Difference